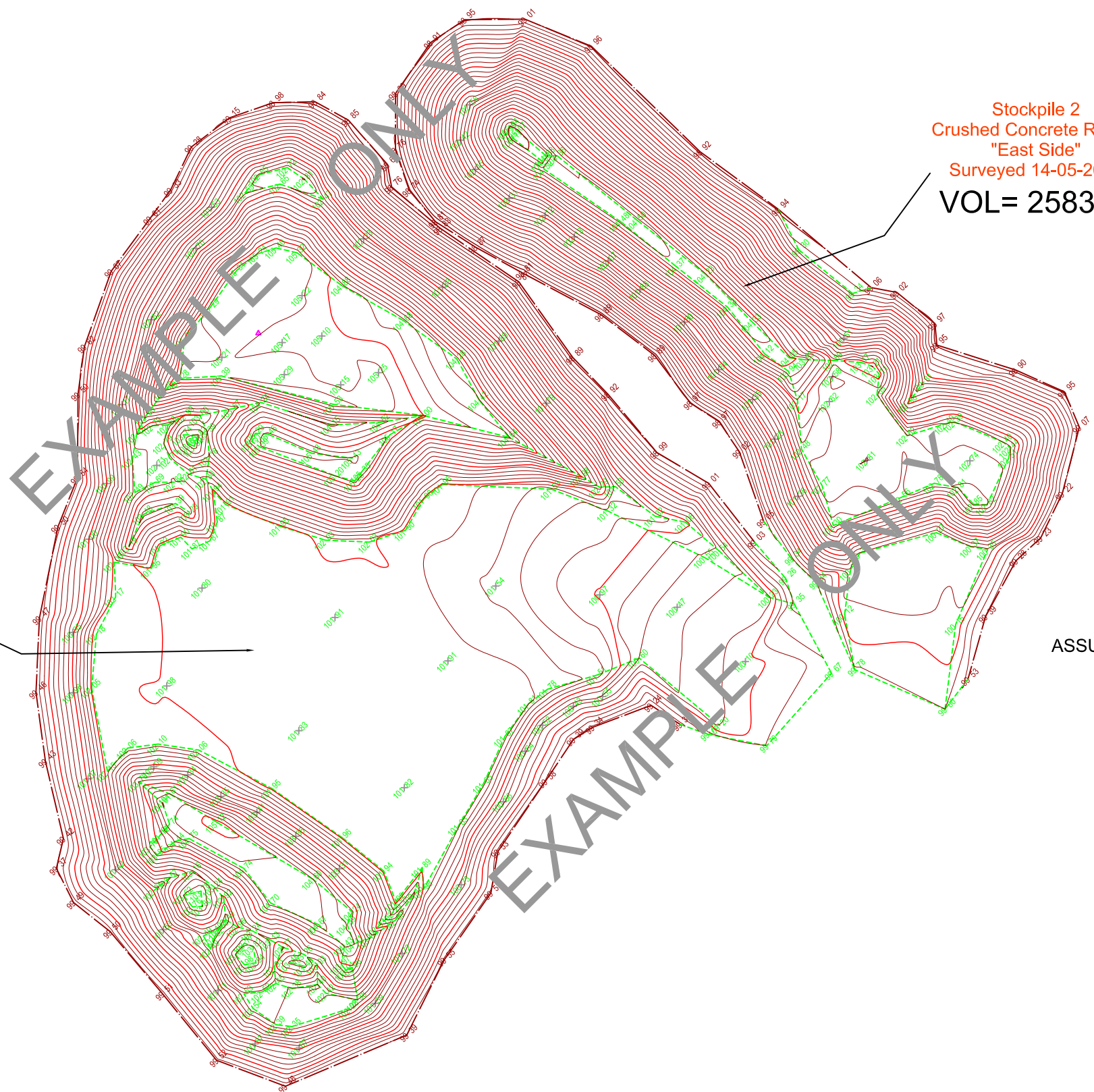


Stockpile 1
Crushed Concrete Rubble
"West Side"
Surveyed 14-05-2009
VOL= 7512m³

Stockpile 2
Crushed Concrete Rubble
"East Side"
Surveyed 14-05-2009
VOL= 2583m³

NO TRUE BASE MODEL MESH ISSUED
ASSUMED BASE FROM LEVELS AROUND STOCKPILE BASE AND RAMP



LOCATION PLAN
2009 AERIAL PHOTOGRAPHY
NOT TO SCALE

LEGEND OF FEATURES

	CONTOUR MARK (1.0m)
	CONTOUR INTERVAL (0.20m)
	LINE OF LEVELS
	SURFACE POSITION & HEIGHT LEVEL

STOCK-PILE SURVEY
SURVEY OF TWO CONCRETE RUBBLE
RAILWAY PDE, BAYSWATER

DATUM
HORIZONTAL - ASSUMED
VERTICAL - ASSUMED
COPYRIGHT OF ALL THIS PLAN IS RESERVED BY BROWN McALLISTER SURVEYORS AND REMAINS THE PROPERTY OF THE AFOREMENTIONED AND SHALL BE RETURNED UPON REQUEST. USE OF ALL OR PART OF THIS PLAN IS RESTRICTED WITHOUT PRIOR WRITTEN PERMISSION.

SCALE 1 : 200 (@ A1 SIZE)
0 2.5 5 7.5 10
All distances in metres unless stated otherwise

THE BOUNDARIES WERE NOT RE-ESTABLISHED AS PART OF THIS SURVEY THEREFORE THIS PLAN DOES NOT GUARANTEE THEIR ACCURACY
FIELD INSPECTION IS RECOMMENDED FOR LOCATION OF SERVICES PRIOR TO ANY EXCAVATION

No.	0	APPROVED & ISSUED TO CLIENT	20/05/09	M.J.M.	CHECKED
		DETAILS	DATE	DRAWN	CHECKED
REVISIONS					

Brown McAllister Surveyors
Licensed Surveyors | Land Development & Strata Consultants | Engineering Surveyors
Email : mail@brownmcallister.com.au Tel: (08) 9386 9688
43 Broadway, Nedlands, Western Australia, 6009 Fax: (08) 9386 9677

SHEET	A1
SURVEYED	P. BANASZEK - 14/05/2009
FIELD NOTES	FB -LB
DRAWN	M.J.McDONALD - 20/05/2009
CHECKED	
REFERENCE	09085-1F

Client